



PURPOSE: The purpose of the Gem, Lapidary, and Mineral Society of Montgomery County MD., Inc. is “To increase knowledge and popular interest in earth sciences, geology, mineralogy, paleontology, lapidary arts, and related subjects”.

REGULAR MEETING Meetings are held the 2nd Monday of the month from September to June. **Next meeting: Monday April 9** in the dining room of the Rockville Senior Center, 1150 Carnation Drive, Rockville. The short business meeting will begin at 7:45 pm but the room is available to us at 7:30 pm so come early and see what you and others have on the Show Table and chat with old friends. Program: “**Gems and pegmatites in Maine: people and places**” by **Rob Robinson**, who is a member of GLMSMC and first became interested in mineralogy after finding interesting rocks in pegmatite dumps while hiking in Maine as a child. He has worked with the U.S. Geological Survey as a research geologist and mineral resources specialist since 1979. His recent work has focused on geologic controls on the occurrence and distribution of contaminants in ground water and the production and use of natural aggregates in the mid-Atlantic region. Other work has included geologic mapping, mineral resource assessment, geochemical modeling, environmental geochemistry, project management, and program development.

Note: We must evacuate the building no later than 10:00 pm and have failed to do so the last couple of months. Please help beat the deadline.

THE BOARD OF DIRECTORS Will meet in April 16, 2007 at 7:30 pm at the home of David and Nancy Ballard. Any member is welcome to attend but please let Nancy know if you plan to attend.

ROSTER CHANGES

New Members: ALBERT, Jo Ann, & GREENE, Timothy F., 9408 Pin Oak Drive, Silver Spring MD 20910-1545, She (301) 379-7979, He (301) 806-7978,



She: sadyemom@aol.com, He: tfgreene@aol.com
Daniel Greene (5/90)

ALLAIRE, Keith and Carolyn, 11104 Luxmanor Road, North Bethesda, MD 20852-3620, (301)231-4867
Joseph (1/93) **Science Fair Winner**

SHUPE, Alf, & HUNTER-SHUPE, Cynthia, 10316 Lewis Drive, Damascus MD 20872-1714,

She (301) 987-4835, He (301) 538-0156, She: shupec@his.com, He: alf@dragonsrest.com

POWERS, Owen, & DENTES, Antonia, 2810 Abilene Drive, Chevy Chase MD 20815-3015, She: adentes@aol.com, He: opowers@aol.com
Joseph (11/90), Meredith (9/93)

Change: FELSEN, Heather, 13621 Deerwater Drive, Germantown MD 20874-2847, Same phone & E Mail

Rejoined: CILETTI, Michael & BROOKS, Barbara, 20007 Hob Hill Way, Montgomery Village MD 20886-1306, 301 948 8490, She: metermau@aol.com, He: mcvitamam@aol.com

CULBERSON, John, P.O. Box 7116, Arlington VA 22207- 7116, 202 225 9733, culby7@comcast.net

Caroline B. (10/96)

FULCHER, James, and Pat, 10433 44th Avenue, Beltsville MD 20705-2450, 301 937 3529, mompat9727@aol.com

DEADLINE for the May 2007 Rockhounder is April 30th.

IN THIS ISSUE	
Meeting Announcements, Roster Changes, Rockhounder Deadline.....	1
Regular & Board Meeting Minutes...	2
Board Mtg. Minutes (Continued).....	3
Show Table, Prizes, Sunshine.....	4
Birthdays,-Diamonds, Science Fair..	5
Hearing Safety, History.....	6
Field Trips, Rockville Science Day, Classes, Badges and Patch, Condolences, Postal Increase.....	7
Show Thanks, Cash and Treasures	
TV, Sterling Hill NJ Super Dig.....	8
Web Sites, Shows and Exhibits.....	9
More Show Thanks.....	10
Private Non-Profit 501-C-3	11

ENJOY!

REGULAR MEETING MINUTES The March 12, 2007 meeting was called to order at 7:47 pm by President Scott Braley with a crowd of about 57 people attending. Scott spoke with enthusiasm about the successful Show concluded over the weekend, with nearly 1600 paid admissions. He thanked everyone who participated for their help. Many complimentary remarks were made about the show by our guests. Don Turner reinforced the thanks and said he may have missed recording some volunteers names. Jo Ann Mohr said that she is accepting fabric material for making bags for the 2008 show.

The minutes were unanimously approved for both the February regular and board meetings with the correction that the regular meeting adjourned at 9:55, not 10:55 pm. In Anita James' absence, Wendell told of the upcoming field trips to Rockville Quarry on April 15 at 8:30 am. and to Aurora NC on the same date, and quota of 6 already filled. Until Anita returns you may contact Fred Parker to sign up for Rockville, and Scott reminded that there is a \$5 cost per person for that trip. Anita is finalizing arrangements for the visit to the American Museum of Natural History in NYC for May 6. It will be by Vamoose bus "On your own" with the Society paying admission to the museum and Gold exhibit. Details will be published in the April *Rockhounder*. Wendell told of the rejoining of John Culberson and daughter, Michael Ciletti, and Barbara Brooks, and Patricia and James Fulcher to the Society. He spoke about educational programs of the Montgomery County Recreation Dept. and Montgomery Parks (MNCPPC) and will put details of them in the *Rockhounder*. He told of the up coming shows at Chambersburg PA, Johnson City NY, Atlantic Micro-mounters Conference at Elkridge MD, and Columbus OH, which will take place before the April Newsletter is published. Other shows mentioned will be publicized in the April newsletter.

Tim Morgan told of the Bead Museum's Family Fun Day March 17th at 7th and D St. NW DC.

VP and Program Chairman, Harry Lupuloff introduced the speaker of the evening, Dave Mitchell who showed a video about the discovery and exploration of a new area in Grand Caverns 30 miles South of Luray VA. Discovered in 1806, the caverns there were the first commercial caves in the U.S. A 200th anniversary re-survey was started and extended to the new cave section, discovered in the spring of 2004, adding 1.5 miles to the known passages for a total of 3.8 miles. Dave was part of a team, as a "Sherpa", exploring and taping underground. The activity was on weekends once a month for about a year. The video showed shields, columns, cave bacon, stalactites, stalactites, and other formations, virtually undisturbed. Circuitous transverses, crawling through sections as small as 8", enlarged to 9 1/2", high caused some to get stuck. The new section has large rooms with bending stalactites, soda straws, pits and ponds. The video told of measures taken to restrict disturbing the cave, even taking off boots in one section to reduce traces. Dave shared his experiences and answered lots of questions after the video.



Guests were Elmer Lentz, Robert Clemenzi, Jo Ann Albert, Cynthia Hunter Shupe, and Owen Powers, and the latter three were unanimously voted into membership.

After a break, Scott read a letter from Christian Samper K., Director of the Smithsonian National Museum of Natural History, thanking the Society for the donation of three mineral specimens.

Juan Proaño, Treasurer, reported 1569 paying guests at the show for admissions receipts of \$7403.85, and Raffle proceeds of \$230.84. Dues were received from three new members tonight.

Joel Rosen aptly handled the Door Prizes. Six juniors and many adults were held in suspense during the drawings. See winner's list on page 4. Show table descriptions included a special talk by George Durland on Terlingua type calcites. Brief talks by adults and youth were specially interesting. The meeting was adjourned at 9:55 pm. Secretary Pro Tem Wendell Mohr

BOARD MEETING MINUTES The March 19, 2007 meeting at the home of the Ballards was called to order by President Scott Braley at 7:42 pm. Board members present were Nancy Ballard, Scott Braley, George Durland, Harry Lupuloff, Wendell Mohr, Juan Proaño, and Joel Rosen. Member present was David Ballard. Scott reported that, with the show over, he will be working on the Society web site. He also said that he is

BOARD MEETING MINUTES Continued. investigating field trip possibilities for VA and PA trips.

An extensive discussion about the very successful Show was conducted, concentrating on positives as well as areas for attention for 2008. Many guests were very complimentary about the Show. We had a lot of member volunteer time but could have used more. A few people, as usual, were stellar in helping. Scott said that the mineral dealers were thrilled and the gem and jewelry dealers were pleased with their results. Juan had a preliminary financial report which shows a "Profit" of about the same as last year after we have some final expenses are logged. Scott will write a quasi-formal report for the Board summarizing key points and making recommendations. The time is about here to replace our aged show cases. The effectiveness of paid advertising in the Gazette was questioned and alternatives (Smaller ad, other papers) discussed. Joel reports no leaks in the trailer after covering and sealing the skylights. He also said we had gotten the MVA registration. Trailer storage and towing was compared to other alternatives and present arrangement is working.



Juan reported that the auditor's favorable report was received and the annual financial report is available and both will be included, for members only, with the April *Rockhounder*. Juan reported present balances. One check to a speaker was never cashed and is over a year old.

Joel was authorized to spend the \$88 not yet spent for door prizes as he sees fit (It is within the budgeted amount). He will concentrate on Junior items.

George Durland reported on the 501 C 3 private non-profit IRS request. A letter received said we had not submitted the page with officer's signature and date, however he has a copy showing we did. We are requested to amend the Articles of Incorporation (A MD document) to satisfy the IRS requirements. An extension to April 15 was given to accomplish this. George will determine how this is done. We will have to submit a 990 form (Tax return for our Society), and tax for 2003, 2004, 2005 about which there is uncertainty. Juan believes that, with gross income under \$25,000, there should be no tax. We were told that they will approve our application if these things are done. A motion was made and passed that we modify the Original August 20, 1974 Articles of Incorporation as stated by IRS. George will check with the Montgomery County Clerk how to change the incorporation papers. It will also be determined if a Board vote is sufficient, or if all members must vote, in which case we need to notify membership before the April regular meeting.

Harry reported that member Rob Robinson of USGS will be the April speaker if we can have a digital projector available. Many speakers have gone to power point presentations. It is now timely for the Society to purchase one. It would be stored by the VP. A motion was made by Joel Rosen, 2nd by George Durland, and passed to authorize the purchase of a digital projector for up to \$1200. Scott will investigate (Joel has a reference of a school supplier) and purchase. George reminded that speaker information is needed a couple of weeks in advance for newspaper announcements.

Robert Irby will make a replacement tray for one club grinder. The board reviewed and sustains the prior policy of not loaning out the lapidary equipment during the year to members or others.

George stated that he, Harry Lupuloff, and Rod Towers selected one junior category award winner at the 51st Annual ScienceMONTGOMERY Fair, It was held Saturday March 17th at the fairgrounds. Winner of our special award, \$50 and Society membership, was Joseph Allaire. He is in 8th Grade. You will hear more on this later.

The problem of meetings running late was discussed. We will try setting up the fluorescents in the rear side room so as not to interfere with the show table. Also we need to limit the break period. George Durland did not sign up to handle the Rockville Science Day this year (April 29th) because of the conflict for he and Rod Towers with the NJ fluorescent Show. Perhaps we can solicit someone else by way of a *Rockhounder* announcement. Scott will be contacting a new member, who expressed some interest, for the Society Secretary position. Jeffrey Post says that the Smithsonian Mineral Sciences Dept. is considering another open house. We are hoping for a favorable outcome in the near future. More library activity is needed. Name badges will be promoted in the *Rockhounder*. Field trips will be covered in the newsletter. Material from Darryl Powell to promote Jr. activities will be shared with Rod Towers for possible use. Adjourned 10:09 pm. George Durland to resubmit Each-one-teach-one submission lost.

Wendell Mohr, Secretary Pro Tem

SHOW TABLE

March 12, 2007 * = Self-collected

Paul Braley	Geode	Mexico
Scott Braley	Fluorite and Barite*	Royal Flush NM
Mark Dahlman	Patuxent River Agate	Boys MD
Eric Durland	Willemite and Franklinite crystals	Franklin NJ
George Durland	Nine Terlingua type Calcites	Various
Karen Durland	Calcite, Dendrite	Medford Quarry Westminster MD
	Grossular Garnet	Rockville MD
Jonathan Harris	Stilbite and Chabazite on Hornfels*	Manassas Quarry, Manassas VA
Pat Jayne	Optical Calcite	Chihuahua, Mexico
	Fossils	Prince Georges County MD
Alexandra Kindahl	Amethyst, Blue Lace Agate, Dyed Agate, Lapis Lazuli, Sodalite, and Blue Topaz	Locality Unknown
Eric Kindahl	Marine Carbonate with Homotrema rubrum	San Salvador Island, Bahamas
	Fossil Forams*	
David MacLean	Sands*	NW WA
		Dalmatian Coast of Croatia
Chuck Mason	Quartz, etc. (Patuxent River Stone)*	Prince Georges County MD
Andy Muir	Thunder Egg	Oregon
	Neptunite*	San Benito County CA
George Reimherr	Spessartine, Smoky Quartz,	Tongbei, Fujian Province, China
	Fluorescent Hyalite Opal	
Joel Rosen	Brucite	Wood's Mine, Lancaster County PA



MARCH PRIZES: The Junior Prize, a Meteorite from Imilac in the Atacama desert, Atacama, Chile was won by Savannah Muir. The General Door Prize, won by Pat Jayne, was an Agate bowl from Rio Grande del Sol, Brazil. Joel Rosen, who leads the spirited drawing monthly, won the Show Table Prize, a British Columbia, Canada Jade. He did not draw his name himself so fair's fair!

A CHOICE between galena and cinnabar? Either ore. When their mine became defunct, Jake and Abe decided to grow mushrooms in its cool, dark tunnels. Business prospered, but Jake wanted all the profits so he decided to kill Abe by planting some poisonous varieties in his partner's section. When Abe found out he had Jake arrested. Although the charge of attempted murder was dismissed for a lack of evidence, the court did find Jake guilty of corrupting the morels of a miner. Posting to the Rockhounds list "From a copy of the Pun American Newsletter shared by someone who thought I would appreciate the rock jokes." Via NOVA Mineral Newsletter

HINTS: Never test, with your nose, to see if a grindstone is turning - it is only an expression. It is never a good idea to test the readiness of dop wax with your finger tip - it really sticks on good! If your opal turns red you are probably grinding your finger tips. Island Gem and Rock



SUNSHINE: Keep positive thoughts for Nancy Ballard who is having additional treatments. Again good wishes to Dave Smith who fell on ice breaking his leg. He was getting around in a wheel chair at the Show. Get well soon. Also in a wheel chair at the Show, with her care giver, was Anna Marcus. Good to see you again, Anna.

APRIL MEMBER BIRTHDAYS: Matt Charsky, Edward Cragg, Elsie Durland, Karen Durland, Chris Herbstritt, Sarah Kaider, Anna Marcus, Michele McMurtry, Michael Tihomirov, Virginia Vance, Charles Zellers. **April's Birthstone, Diamond:**



The Ekati Diamond Mine is Canada's first diamond mine. It is located 300 km NE of Yellowknife, NW Territories, and about 200 km south of the Arctic circle. Ekati is a joint venture between BHP Billiton Diamonds Inc. (80%), and the two geologists who discovered kimberlite pipes north of Lac de Gras, Chuck Fipke (10%) and Stewart Blusson (10%). In 1991, the first kimberlite pipe in Canada was discovered at Pointe Lake. This was followed by the largest staking rush in Canadian history. Ekati officially opened on October 14, 1998, and is operated by BHP Billiton Diamonds Inc., a part of the BHP Billiton Group, the world's largest diversified resources company. Diamonds at the Ekati site are found in 45 to 62 million year old kimberlite pipes (Creaser et al, 2004), most of which lie underneath shallow lakes. Diamonds from the Ekati Mine are sold under the trade name Aurias. Authenticity is verified through the CanadaMark service, also operated by BHP Billiton Diamonds Inc. Between 1998 and 2004, the mine produced 26,033,000 carats (5,207 kg) of diamonds! It is expected to yield revenues of about C\$500 million a year for at least 25 years.

Nunavut diamond exploration and production is providing one of Canada's poorest regions with new economic opportunities. A wide swath of the eastern Arctic is at the center of a continuing staking rush for diamonds and gold, and with that comes dreams of jobs and investment. Prospecting permits were requested mostly in a broad strip along the west shore of Hudson Bay through the Melville Peninsula into the High Arctic. DeBeers Canada and BHP Billiton had many permits for the burgeoning diamond sector. Five years are allowed to examine and stake specific claims. Less than half the territory has been adequately mapped. Millions of dollars are being spent on exploration. Inuit are the ones who find the stuff. They can cover more ground more accurately than anyone. Remoteness and permafrost makes it difficult for transportation in the area. Two diamond mines in western Nunavut and Miramar's Hope Bay gold project are all expected to open within the next few years. Exploratory drilling since 1999 west of Rankin Inlet also reveals a vast copper, nickel, platinum and palladium ore body estimated worth \$5 billion or more.

Excerpted from Prince Albert Daily Herald from the Gem and Mineral Federation of Canada via the Canadian Press CP © and Wikipedia

SCIENCE FAIR The 51st Annual Montgomery County Science Fair was held on March 16, 17, and 18, 2007 at the Montgomery County Fairgrounds. Students set up their displays in the evening of the 16th and Judging was on Saturday, March 17th. Our society was represented by volunteer special judges George Durland, Harry Lupuloff and Rod Towers. They previewed all projects and decided which projects fit into the earth science category. Students in grades 6-8 were interviewed from noon to 3:00 pm and in grades 9-12 from 2-5 pm. The special award, consisting of membership in our Society and a \$50 check from our society, was made to: Joseph Allaire, an 8th grade student at Holy Cross Elementary School in Garrett Park. The title of his project was "Save the Sand - Reducing Beach Erosion." The awards ceremony was held from 2-4 pm on Sunday, March 18th in the Gaithersburg High School Auditorium. Thanks to George, Harry and Rod for volunteering their time on a cool but pleasant day which happened to be on the same weekend when we generally hold our show. The Montgomery County Science Fair (ScienceMONTGOMERY) is one of the largest science fairs in the United States. It is a tax deductible organization dedicated to encouraging and promoting an interest in science to the youth of our area, encouraging scientific activities, and bringing together scientists, engineers, mathematicians, educators, students and parents. ScienceMONTGOMERY provides a venue for over \$45,000 in prizes for outstanding projects in the middle school and high school divisions. They send the top senior high school winners (fully funded) to the Intel International Science and Engineering Fair 2007 in Albuquerque, NM where they compete against winners from the United States and over 38 foreign countries. By participating, students become eligible for over \$3 million dollars in scholarships, tuition grants, scientific field trips, summer internships and other awards. It is nice to know that our society supports such a worthy organization.

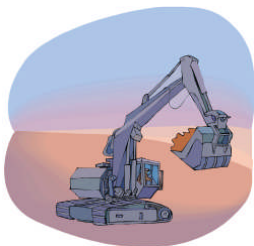


Prepared by George Durland

SAFETY FIRST - HEARING SAFETY

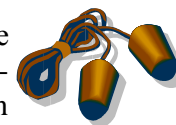
by Bill Klose, EFMLS Safety Chair

How many times have you told your kids to “turn down that loud music, you will hurt your ears”? Most everyone is aware that loud sounds such as gun fire, explosions, and occupational jobs that expose workers to excessive noise, like in a “boiler shop” can lead to loss of hearing. But did you know that exposure to low levels of noise for prolonged periods of time can also lead to what is known as Noise Induced Hearing Loss or NIHL? Sources of this noise of course includes loud music and motorcycles, but also can be generated by airplanes, automobiles, recreation vehicles, and some appliances, and can over time exact a gradual toll on ones hearing, initially without your even being aware of the loss. Very loud sounds of short duration can produce immediate, severe, and permanent loss of hearing. The louder the level of noise, and the longer the duration of exposure, the greater the potential for permanent damage.



As rock hounds, we are exposed to noise in our vehicles on the way to and from collecting sites. Some collecting sites, such as quarries, contain industrial equipment that can generate considerable amounts of noise. The use of hammers, gasoline and shop rock saws, rock trimmers, and grinding wheels all contribute to the continuous bombardment on our hearing by everyday activities around the house such as music, television, household appliances, and power equipment.

The best method for protecting ourselves from NIHL's is to eliminate or reduce the intensity of noise sources and the time of exposure. When exposure to noise sources is unavoidable, wear hearing protection in the form of ear plugs (disposable or fitted) or ear muffs. When at an industrial site, wear the same level of protection as the workers at the site are wearing, as the employer has determined the level of protection required for the protection of his employees.



MORE OF 1989 In September's Rockhounder of that year, Editor Nancy Ballard, in addition to announcing the month's program, also wrote a comprehensive article about the month's birthstone, Sapphire. In reading the article, I realized how much about the gemstone I'd forgotten, particularly its range of colors. It's difficult to believe that this stone, noted primarily for being brilliant blue, can be found in yellow-orange, orange-brown, pink, various shades of purple, and even colorless! Ain't Nature wonderful?

Getting to September's meeting, it was double-header night once again. The first program of the evening was presented by 7th-grader Brian Newbury, who had been the winner of the Society's Junior Award at the year's Science Fair. Brian spoke on "An Investigation into Crater Formation." In addition to our award Brian also won one from the League of Women Voters for the project, and then he won a pyrite specimen, one of the evening's Show Table prizes.



VP Gordon Austin provided the “Nightcap” program. Gordon was the Gemstones and Abrasives Specialist at the Bureau of Mines, and gave a talk concerning statistical and descriptive information about US gemstone production. At that time there were 284 producers of gemstones in the US. Surprisingly, Tennessee led the country, mainly because of pearls from 9 pearl farms. Arizona had the widest range of gem material. Also, he mentioned the recent find of a tourmaline strike of 1.4 million carats at the Himalaya Mine in California, the largest find of gem material in North America in the 1980s. Among slides Gordon showed were some of topaz from Idaho. At that time it was permissible to hunt for the gems in the Sawtooth National Wilderness. He emphasized that “Collecting” was OK, but not “Mining”, the difference being the former is for one's own use, the latter is taking extra for trading, which was classified as being commercial. A \$500 fine and confiscation were the penalties for the latter! (I don't know if these rules still are in effect; I suggest checking with the US Forest Service.)

À votre santé !! Some people think Geology is a dull subject with little relation to the “real” world; well, read what Editor Nancy found in, of all things, the Food Section of the 9/29/89 edition of *The Washington Post*, written by Ben Giliberti:

“Bordeaux wines' greatness is due to the soil the vines grow in, which consists of deep beds of cailloux which are egg-shaped quartz pebbles deposited in the Bordeaux area by glaciers. The deepest beds of the pebbles are in Graves commune where loose stones have been found 18 feet deep. The benefit of the cailloux appears to be the excellent drainage they provide.”

The thought comes to mind: Are rose quartz pebbles used for vines that grow the grapes for rosé wine? On that note I'll sign off. See you next month.

Jack Busch

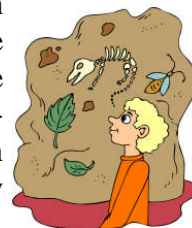
FIELD TRIPS If you do not have E Mail, get in touch with the Field Trip Chair Anita James to inquire about trips not yet listed at 301 652 5527. Others E Mail <johnjames04@comcast.net>. Everyone should contact her to indicate you're going and to get any additional details. Anita reminds us that if you leave a message on her answering machine be certain to leave your phone number so she can get back to you.

April 15 Rockville Quarry 8:30 am. There is a \$5.00 charge.

April 15 Aurora NC. Jennifer Wingard is handling our trip for Miocene fossils at the Lee Creek Mine. All allotted slots are filled. If you signed up and cannot go, phone Jennifer at 540 832 5195 or E Mail at <xtlresearch@yahoo.com> so wait list people can go in your place.

May 6 American Museum of Natural History in New York City to see the exhibition on GOLD and mineral and fossil exhibits. Open to all members including juniors. You will be responsible for your own travel, but our Society will reimburse you for the admission to the show. Adults: \$21.00, Children (2-12): \$12.00, Senior/Student with ID: \$16.00, AMNH Member Adult: \$10.00, Member Child \$6.00. IMAX theater is not included. Meals are at your own expense. Vamoose bus leaves from Rosslyn VA as early as 7:30 am or Bethesda MD as early as 8:00 am. Return is as late as 7:00 pm leaving NYC. See <<http://www.vamoosebus.com/>>.

It is about a 4 hour trip each way. \$25 each way, cash or personal checks accepted on the bus. Or you may want to take Amtrak (\$67 one way lowest). Make your own reservations. Some members might want to drive, or go early or stay late and stay overnight in the city. Others will make it a one day excursion. Contact Anita James for further details, bus schedules, etc.



ROCKVILLE SCIENCE DAY The Rockville Consortium for Science has scheduled April 29th Noon—5 pm, for this year's affair. It is designed for Kids and their families and features many different science based demonstrations. Admission and parking are free at the Montgomery campus of Montgomery College. At this time we have no one able to participate and represent us in this event. Traditionally we have had participants cover: Maryland Gold and Minerals (Jack Nelson), Mineralogy: Rock On! (Jim and Michelle Michaelis), and Worldwide Fluorescent Minerals (George Durland). If you can give a hand and make a presentation, let George Durland, who has information, know.

CLASSES Get the Spring 2007 Guide for Recreation and Park Programs from your library or County Center.

There are nine different one or two session classes on Jewelry for those age 12-99 with instructor Donna Weeks. Cost varies from \$30.00-\$40.00 and may have a materials charge in addition. They start as early as April 11th, with the last starting June 6th.

Our member, Lisa Carp, again will be teaching Gemology I and II at Concord school. Gemology II begins on Tues. April 17th and Gemology I on Wed. April 18th, in classes of 9 sessions each, running from 10:00 to Noon. Cost is \$87.00. Lisa's groups have put together exhibits for several years now for our Show. Thanks!

Other classes for children will be sponsored by Parks or Nature centers and are summer programs in July.

SOCIETY NAME BADGES AND PATCHES You are strongly encouraged to wear a name badge to meetings and other functions of the club. If you do not have one, they are available from Membership Chairman Nancy Ballard for \$5.25 each and are personalized. We also have Society patches, about 3 inches diameter, available from Treasurer Juan Proaño for \$2.00.



CONDOLENCES We were saddened to hear of the death of long time ex-member Rose Williams who was 92. She and her predeceased husband, Capt. Robert Williams Jr., were active in the Society. Her two daughters and three sons all still reside in the National Capital Area and our thoughts are with them at this time.

POSTAGE Postal rates are going up again in May with first class to be \$0.41 for the first ounce. It is timely to remind you that you have the choice of receiving the *Rockhounder* by E Mail only. Electronic Delivery saves the postage and is in living color! Let your editor know if you want to discontinue snail mail.

THANKS The 2007 43rd Annual Gem-Mineral-Fossil show is history. We can now look back with gratitude to those who put in so many hours to create the success that it was.

Recognition goes to **KEY people: Scott Braley** served as a first time **Show Chairman** (In addition to his leadership as President) and arranged the venue, table and chair rental, security, and secured dealers. He also provided two extra exhibits in addition to the three already committed to fill in gaps. George Durland ably assumed handling publicity, coordinated the fluorescent display and lectures, and brought together the Club Meteorite exhibit. Heather Felsen resourcefully tackled a new assignment and mustered the many fine exhibits. Bob Irby brought together a fine array of demonstrators and oversaw the raffle. Don Turner showed his mettle in capably taking his new assignment of Shop Coordinator, shepherding 223 people through the operation. Paul Vance managed pre forms and trained people to work the shop. The trailer and all things electrical were competently managed by Joel Rosen. Wendell Mohr produced signage, demonstrator and exhibitor certificates, handled door prizes, and photographed the event. Michelle and Jim Michaelis, as usual, skillfully handled the Junior activities, Touch'N'Feel, and Give-away tables as well as providing 3 exhibits at the last minute to fill gaps. Nancy Ballard merits appreciation for her continuing role working on volunteer signup, hospitality table, and ticket sales. **WOW!**

Nancy reports paid admissions of 1569 down slightly from 2006's 1603 but greater than 2005's 1381. These numbers do not include the many children, dealers, exhibitors, demonstrators, and GLMSMC members who worked at the show.

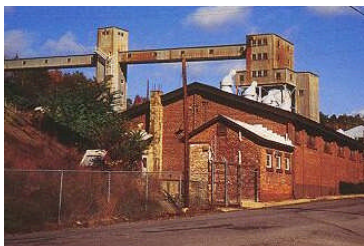
Raffle winners were: Lot #1 AND Lot #3!, Frank Janicki of Springfield VA, Lot #2 Alexander Roussell of Ellicott City MD, and Lot #4 Howard Smiga of Darnestown MD.

A junior member was selected to receive the Lillian Turner Award, a \$100 U.S. Savings bond.

Looking forward to the Show in 2008, are you willing to serve as Show Chairman or be a KEY person? See More Thanks on page 10.

CASH AND TREASURES PROGRAMS The Sterling Hill Mining Museum and its world renowned fluorescent minerals are featured on the Travel Channel's "Cash and Treasures" series in an episode titled "Fluorescent Minerals." A film crew visited Sterling Hill last June to film on site, tour the underground mine tunnels, and conduct interviews. The program showcases the rich fluorescent minerals and numerous exhibits at Sterling Hill in Ogdensburg, NJ. The Travel Channel has reruns of "Cash and Treasures" Programs. See web site: <<http://travel.discovery.com/tv/cash-treasures/cash-treasures.html>> for schedule of dates and times.

STERLING HILL NJ SUPER DIG The Trotter Dig area has been closed by the owner this year. The Sterling Hill Mining Museum not only has "dig in the ground" areas but there is also the mine and other machinery that was used by the NJ Zinc Company. Much of that property has never been open to the public. Open hours will be from 9 am through 11 pm April 28, 2007. Collecting fees will cover both day and night collecting. Age 13 and above will be allowed in the "pits" and age 9 and above will be permitted in the "Mine run dump area." Safety goggles and durable footwear are mandatory (no sneakers or sandals). Work gloves are strongly recommended. The Sterling Hill "Fluorescent wall" will be lighted up. Recently, excavation equipment has uncovered tens of tons of new material. The admission fee will include a tour of the mine and mining museum. Mid-afternoon there will be a guided tour of the upper mining operations, not open to the public. A special "Blackout" tour of the mine is planned for 7 pm so those with UV lamps can explore the fluorescence in the mine itself. Every person attending the Super Dig will be able to pick a piece of ore from the conveyor as a collector's item. This is the last ore that came out of the mine. On-line registration will be open until 8 pm April 23rd. For further information about the Super Dig, maps, directions, local hotels and motels, visit <<http://www.UVWorld.org>>. Be sure to review the Safety Handbook (link is just under the photo on main web page) as well as the insurance requirements and Federation safety rules (links on the Trip Info page). Jeff Winkler Tripmaster – Sterling Hill Super Dig. (Same Week End as the Franklin Show) See Upcoming Shows & Exhibits page 9.



**WEB SITES**

The Maine Pegmatite Workshop - 2007 at <<http://homepage.mac.com/rasprague/PegShop/>> is presented by Dr. William "Skip" Simmons of the University of New Orleans, and by Ray Sprague, co-director. The event, a workshop, studying pegmatites of the world, their origins, mineralization, and structure will be held in Poland ME from May 26 to June 3. The site includes information about the faculty, curriculum, special lectures, course book, field trips, museum tour, bus field trip, venue (Poland Mining Camps, featured in a previous web site article and visited by Scott Braley), functions, registration, and pricing etc. Even if you do not attend, see magazine, Vol. 1, 2, & 3 for informative articles including a slide show (And a few things not pegmatite related). They recommend a fast method of cleaning your finds. Load them in your pickup and drive through a car wash. One guy up there loved seeing how thin he could separate muscovite plates with his jack knife. He can't do it too long because he gets a splitting headache.

Contributed by Wendell C. Mohr



Axis On Line Journal <<http://www.minrec.org/journal.asp>> is a peer reviewed eclectic journal of mineralogy. It is sponsored by *The Mineralogical Record* to permit publication of more articles and papers than can be accommodated in the magazine. You will find about a dozen and an half excellent articles. One lead story is about galena. The man ingested quite a bit of galena that lead to his death. Thanks to the Friends of Mineralogy PA Chapter Spring 2006 Newsletter for the lead.

Devonian Times by Dennis C. Murphy at <<http://www.devoniantimes.org/>>. The site brings you a front page in newspaper format. Read about the "Fishapod" from the Nunavut Territory, Canada which sheds more light on the transition from lobe-fin fishes to tetrapods, and other fossils of similar type. "Opportunity Knocked" traces evolution during the Devonian Period (Age of Fishes) 410-356 million years ago. "Who's Who" concentrates on the Devonian site at Red Hill in central PA. (There is a special section at that excavation which is designated catch and release!) Be sure to click on the topics along the left side to explore the fine points. "Site Index" is more comprehensive as to the content. Enormous armored fish with jaws are the first known great fish predators. Dunkleosteus is the most famous example and is the o-fish-al fossil.

**UPCOMING SHOWS & EXHIBITS:**

April 12-15 34th Annual Rochester Mineral Symposium, Radisson Hotel Rochester Airport, 175 Jefferson Road, Rochester, NY 14623. Early Registration Deadline was March 12, 2007. Thur. afternoon, all day Fri. & Sat., and Sun morning sessions. Micromounter's Playroom. E-mail contact: <contactrms@hotmail.com>.

April 28-29, Franklin NJ, 35th Annual Show and Outdoor Swap of the New Jersey Earth Science Association, Franklin-Ogdensburg Mineralogical Society, & Sterling Hill Mining Museum, Franklin School, Washington Ave., Sat. 9-5:30, Sun. 10-5. Adults \$5.00, children under 14 free with adult. Contact Sterling Hill Mining Museum, (973) 209-7212 or Fred Stohl, 10 Millen Dr., Toms River, NJ 08753-5219, (732) 341-3553.

May 5-6 Bead Society of Greater Washington, 45th Semi-Annual Bead Bazaar, 10-5 Sat., 11-5 Sun., Activity Center at Bohrer Park, 506 S. Frederick Ave., Gaithersburg MD \$7.00. Information: 202 624 4500.

May 26 18th Annual Chesapeake Gem & Mineral Show sponsored by the Chesapeake G & M Society, at Goucher College, Towson MD. 10-4. Free admission. Information: 410 832 5906

August 4-5 GLMSDC 58th Annual Gem & Mineral Show, Stone Ridge School, 9101 Rockville Pike, Bethesda MD. Sat. 10-6, Sun. 10-5. Admission \$6.00, Sr. \$5.00, Under 6 Free. Info: <www.GLMSDC.com>

Now Through September 23 "Mining Montgomery", by the Montgomery County Historical Society. An exhibit at the Beall-Dawson House, 103 W. Montgomery Ave., Rockville MD. Examines mineral resources of our county, people involved, and way resources have been used. Much focuses on the county's gold mines. Tues.-Sun., Admission \$3.00, Sr. and Students \$2.00.



Q: What do you call 10 fluorescent collectors standing ear to ear? A: A wind tunnel.



MORE THANKS *Gratitude-----Credit-----Appreciation-----Gratefulness-----Merits To Members:*
Post Cards Charles Zellers prepared labels, Dave & Nancy Ballard labeled, stamped, and mailed 2420 cards!

Friday Set-up Helpers Dave & Nancy Ballard, Scott Braley, Eric Durland, George & Elsie Durland, Karen Durland, Bob Irby, Anita James, Eric Kindahl, Chuck Mason, Jim & Michelle Michaelis, Wendell & Jo Ann Mohr, Juan Proaño, Joel Rosen, Rod Towers, Don Turner, and Bob Winfield.



Saturday & Sunday (Combined for convenience) Dave & Nancy Ballard, Chris Barr (Shop), Scott Braley, Jack Busch, Leila Campbell (Shop), Andrew Celmer (Shop), Jeff Cessna (Shop), Patricia Cronin, Mark Dahlman, Eric Durland, George & Elsie Durland, Karen Durland (Shop), Jonathan Ertman, Heather Felsen (Shop), Dave Freeman (Shop), Pat Fulcher (Shop), Jonathan (Shop), Susan, and Benjamin Harris, Chris Herbstritt, Chuck and Matthew Hyland and another Boy Scout, Bob Irby (Shop), Eric Kindahl, George Loud (Micromounter Demo), David Maclean, Chuck Mason, Jim & Michelle Michaelis, Wendell & Jo Ann Mohr, Andy Muir, Tom Parnell, Leslie Porter, Juan Proaño, George Reimherr, Pat Repik-Byrne, Joel Rosen (Shop), Lester Shaub (Shop), Nancy Shinowara (Shop) and gathered raffle and door prizes, Rod Towers, Don Turner (Shop), Paul & Virginia Vance, and Bob Winfield (Shop). Thanks also to non-member Shop teachers Julie Marsteller and Max DeMulcher.



Exhibits A copy of the Show program is attached. Mike Shumaker and Tom Tucker did not have an exhibit. Thanks to all for their educational efforts. The Fluorescent displays in the tent again garnered a lot of interest.

Sunday Take-down Helpers Dave & Nancy Ballard, Judy Barr & Friend, Scott Braley, Mark Dahlman, George Durland, Karen Durland & Scott Braun, Bob Irby, David Maclean, Chuck Mason, Jim & Michelle Michaelis, Wendell & Jo Ann Mohr, Jeff Nagy, Tom Parnell, Juan Proaño, Joel Rosen, Nancy Shinowara, Rod Towers, and Bob & Alessandra Winfield. Thanks also to non-member Robert Clemenzi who helped.



Member Dealers Lisa Carp, Andy Dietz, and Fred Parker. Many thanks to all the many dealers who contributed to making the raffle and door prizes possible.

Member Demonstrator Michelle McMurtry.

The program did not list Robert Clemenzi, George Loud, Joe Murter, and Tom Tucker, to whom we are indebted for their hours of volunteered time. Of course we are very appreciative of the other demonstrators listed and who drew crowds and enhanced the show.



About 60 members helped at the show, either by exhibiting, working one of the three days, or being dealers. That is ~44% of "Eligible" members (Local and not infirm). About another 20 members attended the show (15%). Some workers only did a couple of hours but many worked every hour of all days! If we have missed some folks who helped, let the editor know and you will be acknowledged in the next *Rockhounder*. Our guests and dealers alike praised the show and many thanked us for the educational aspects of the show. We can justly take pride in our hard work.

Information compiled by Nancy Ballard with input from Don Turner.

The ANSWER is: Hunters & Gatherers. The QUESTION : What are prospectors and G&M Club members?

**NOTICE OF PROPOSED BY-LAW AMENDMENTS AND OTHER CORPORATE AUTHORIZATIONS
TO BE VOTED ON AT THE APRIL 9, 2007 MEETING**

As some members may be aware, the Society applied last year to the IRS to be a nonprofit 501(c)(3) organization. Before proceeding with the application, the IRS is requiring that our Charter under Maryland law (Articles of Incorporation) be amended.

The Charter and By-laws are silent on how to amend the Charter. The By-laws provide that a quorum for a meeting is all the members present and voting. Amendments to the By-laws require notification in writing to members and publication in the Rockhounder fulfills this requirement. Passage of amendments to the By-laws require a vote of a majority of the votes cast.

This publication in the Rockhounder serves as notification of the following four motions to be voted on at the next meeting on April 9, 2007:

(1) To amend By-Laws Article X – Amendments by the adding the words “of the Society’s Charter or these By-laws” and deleting the word “hereof” so that it reads:

ARTICLE X – AMENDMENTS

Section 1. Amendments: Any article or provision of the Society’s Charter or these By-laws may be altered, amended, supplemented, or repealed by the affirmative vote of a majority of the eligible voting members present at any duly constituted meeting of the Society, provided that notice of any proposed change be sent in writing to all members in advance of that meeting. Publication of the proposed change in that issue of the Rockhounder announcing the meeting shall be considered as filling the requirement, “sent in writing.” Suggested amendments may be submitted in writing to the Board of Directors for consideration and for presentation to the Society.

(2) To authorize the Society’s officers to sign in the Society’s name any necessary documents with the State of Maryland to effect changes in the Society’s Charter to state that this organization is organized exclusively for charitable, educational, and scientific purposes under section 501(c)(3) of the Internal Revenue Code, or corresponding section of any future federal tax code and (2) upon the dissolution of this organization, assets shall be distributed for one or more exempt purposes with in the meaning of section 501(c)(3) of the Internal Revenue Code, or corresponding section of any future federal tax code, or shall be distributed to the federal government or to a state or local government for a public purpose.

(3) To authorize the Board of Directors to appoint a Resident Agent who meets the requirements of Maryland law.

(4) To amend the By-laws by adding to Article V a new Section 4 which reads:



Voting may be conducted at meetings, by email or by other means that reliably provide Directors or Members with adequate notice and the opportunity to vote.

Submitted by Society Member, Patricia Jayne

Copies of the by-laws can be e-mailed to you and there will be copies at the meeting.



Last of this Series

BOARD OF DIRECTORS

President-Scott Braley, 3813 Hillcrest Drive, Annandale VA 22003-2311	301 305 1193
Vice President-Harry Lupuloff, 14005 Gray Birch Way, Rockville MD 20850-5455	301 309 1801
Secretary-Unfilled	
Treasurer-Juan Proaño, 8624 Bunnell Drive, Potomac MD 20854-3545	301 299 2034
Junior Advisor-Rod Towers, 19609 Gunners Branch. Rd., Germantown MD 20876-2738	301 972 1264
Field Trip Chairperson-Anita Lizas James, 4874 Chevy Chase Dr., Chevy Chase MD 20815-6421	301 652 5527
Membership Chairperson-Nancy Ballard, 16812 Baederwood Lane, Derwood MD 20855-2011	301 926 7374
Show Chairman Pro-tem-Scott Braley, 3813 Hillcrest Drive, Annandale VA 22003-2311	301 305 1193
Property Manager-Joel Rosen, 833 Rampart Way, Union Bridge MD 21791-9325	410 775 7937
Immediate Past President-George Durland, 8600 Bunnell Drive, Potomac MD 20854-3545	301 299 8213
EFMLS Liaison-Wendell Mohr, 9509 Emory Grove Road, Gaithersburg MD 20877-3501	301 926 7190
Bulletin Editor- Wendell Mohr, 9509 Emory Grove Road, Gaithersburg MD 20877-3501	301 926 7190

Charter Member: Dan Spielman; Life Members: David Ballard, Nancy Ballard, Jack Busch, Larry Harrison, Anna Marcus, Wendell Mohr, Charlotte Morrison, Dan Spielman, and Paul Vance

Society Address: Gem, Lapidary, and Mineral Society of Montgomery County MD., Inc.
P. O. Box 444, Gaithersburg MD 20884-0444

All Society correspondence is to be sent to this address except that which is intended for the Rockhounder and its editor. Such items are to be sent to the editor's home address.



Permission to copy material printed herein, except specifically copy-righted items, is granted, provided credit is given.



FIRST CLASS MAIL
DATE MATERIAL
TIMES SENSITIVE

THE ROCKHOUNDER
Gem Lapidary and Mineral Society
Of Montgomery County Md. Inc
Wendell Mohr Editor
9509 Emory Grove Road
Gaithersburg MD 20877 - 3501

